



California Faucets®

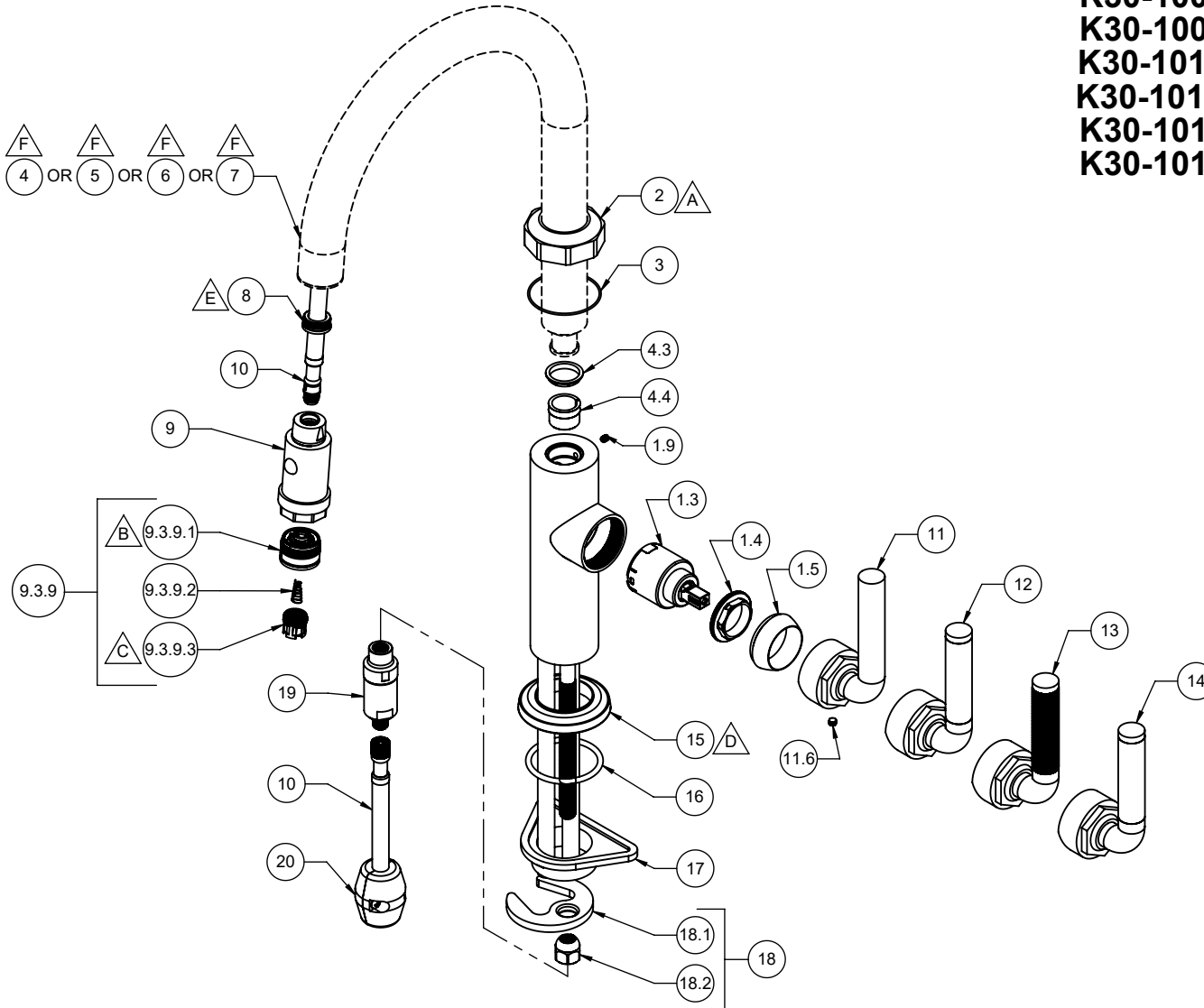
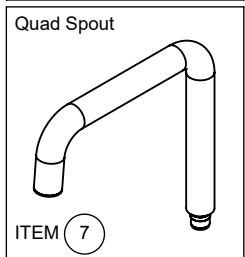
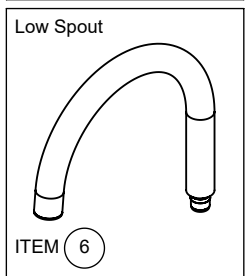
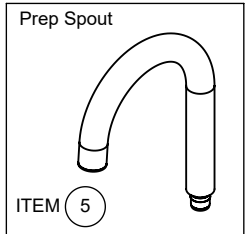
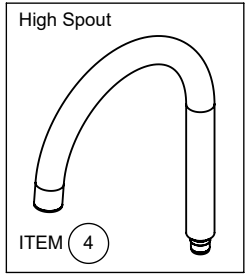
Spare Parts Diagram

Descanso®

Pull-Down Kitchen Faucet

- △ A REQUIRES ITEM (3)
- △ B REQUIRES ITEM (25)
- △ C REQUIRES ITEM (23)
- △ D REQUIRES ITEM (16)
- △ E REQUIRES ITEM (24)
- △ F REQUIRES ITEM (8)

K30-100-SL	K30-100-SL
K30-100-KL	K30-102-KL
K30-100-FL	K30-102-FL
K30-100-TL	K30-102-TL
K30-101-SL	K30-103-SL
K30-101-KL	K30-103-KL
K30-101-FL	K30-103-FL
K30-101-TL	K30-103-TL



K30-100-SL **K30-102-SL**
K30-100-KL **K30-102-KL**
K30-100-FL **K30-102-FL**
K30-100-TL **K30-102-TL**
K30-101-SL **K30-103-SL**
K30-101-KL **K30-103-KL**
K30-101-FL **K30-103-FL**
K30-101-TL **K30-103-TL**

To order spare parts add and/or replace as stated below:

SPD- prefix added to part number(s)
-ZZ replaced with finish code (see finish table)
-WW replaced with **-90** (light finish) or **-96** (dark finish)

Ex: **SPD-7-100362-PC** or **SPD-86030-96**

	ITEM	PART NO.	DESCRIPTION	QTY.
for SL Series	11	7-100279-ZZ	ASM, INDUSTRIAL KIT LEVER - SMOOTH <i>(incl. 11.6)</i>	1
	11.6	86047-90	SETSCREW 10-24 X 3/16 SCKT HD CONE PT SS	1
for FL Series	12	7-100301-ZZ	ASM, INDUSTRIAL KIT LEVER - CARBON FIBER <i>(incl. 11.6)</i>	1
for KL Series	13	7-100300-ZZ	ASM, INDUSTRIAL KIT LEVER - KNURL <i>(incl. 11.6)</i>	1
for TL Series	14	7-100568-ZZ	ASM, INDUSTRIAL KIT LEVER - TEAK <i>(incl. 11.6)</i>	1
	15	10781-ZZ	BASE RING, INDUSTRIAL KIT	1
	16	87139-80	O-RING Ø44.04 X 3.53 (-224) BUNA-N A70	1
	17	880325-81	SPACER, SINGLE HOLE MOUNTING	1
	18	6-200246	KIT, KITCHEN/H2O DISP MNT HDW <i>(incl. 18.1, 18.2)</i>	1
	18.1	880309-98	MOUNTING BRACKET, SINGLE HOLE CRESCENT	1
	18.2	10552-98	NUT, HEX W/ DOME 7/16-24	1
	19	6-200262	KIT, KITCHEN FAUCET CHECKVALVE - 1.85 GPM FLOW	1
	20	6-200249	KIT, KITCHEN HOSE WEIGHT 310g	1
	23	880317-81	TOOL, AERATOR INSERT	1
	24	880533-81	TOOL, SQUEEZE UPGRADE	1
for ITEM 9.3.9.1	25	880333-91	KEY, ALLEN 7.0MM, BLACK	1
for ITEM 1.9	26	882042-99	KEY, ALLEN, 5/64", BLACK	1
for ITEM 11.6	27	882043-99	KEY, ALLEN, 3/32", BLACK	1

	ITEM	PART NO.	DESCRIPTION	QTY.
	1.3	880297-99	CART 35MM, SNGL LVR (COLD TO HOT ROTATION)	1
	1.4	10564-98	NUT, 35MM CART KIT PACKING	1
	1.5	10565-ZZ	BONNET, STD KIT	1
	1.9	86031-WW	SETSCREW 8-32 X 3/16 SCKT HD CUP PT SS	1
	2	10783-ZZ	TRIM, OCTAGON KIT BODY	1
	3	87338-80	O-RING Ø46.00 X 1.20 (NA) BUNA-N A70	1
for 100 Series	4	7-100474-ZZ	ASM, 30MM MAIN KIT SPOUT LESS SPRAY INSERT <i>(incl. 4.3, 4.4)</i>	1
	4.3	10558-81	BUSHING, KIT SPT ADPTR	1
	4.4	11297-81	FRICTION RING, KIT SPT ADPTR - G2	1
for 101 Series	5	7-100475-ZZ	ASM, 30MM PREP KIT SPOUT LESS SPRAY INSERT <i>(incl. 4.3, 4.4)</i>	1
for 102 Series	6	7-100476-ZZ	ASM, Ø30MM LOW KIT SPOUT LESS SPRAY INSERT <i>(incl. 4.3, 4.4)</i>	1
for 103 Series	7	7-100477-ZZ	ASM, Ø30MM 2 BEND KIT SPOUT LESS SPRAY INSERT <i>(incl. 4.3, 4.4)</i>	1
	8	10598-92	INSERT, KIT MAG PULL DN "IRON RING"	1
	9	7-100302-ZZ	SPRAY HEAD, Ø30MM MAG PULL DN - INDUSTRIAL <i>(incl. 9.3.9)</i>	1
	9.3.9	6-200248	KIT, SPRAYER JET/AERATOR <i>(incl. 9.3.9.1, 9.3.9.2, 9.3.9.3)</i>	1
	9.3.9.1	11311-81	FACEPLATE, PULL DOWN SPRAY G2	1
	9.3.9.2	10535-90	SPRING, PULL DOWN SPRAY	1
	9.3.9.3	880553-81	INSERT, AERATOR W/ M16 X 1.0, FULL FLOW	1
	10	880338-99	HOSE, NYLON BRAIDED (DN6) W/ SILICONE, M10 MT X M10 F X 65" "NSF"	1